

DWG. NO.	032-8568		
REVISIONS			
SYM.	E.C.N.	DATE	APVD.
B	23496	9/19/97	
REVISED & UPDATED			
C	24482	1/22/01	
REVISED & UPDATED			

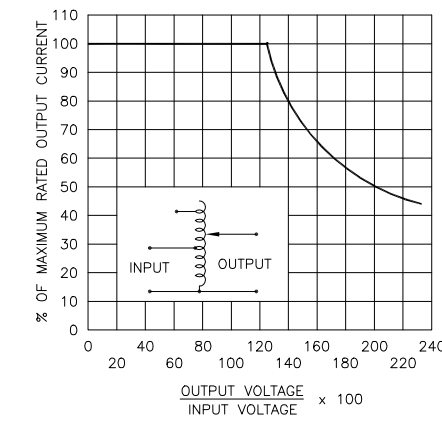
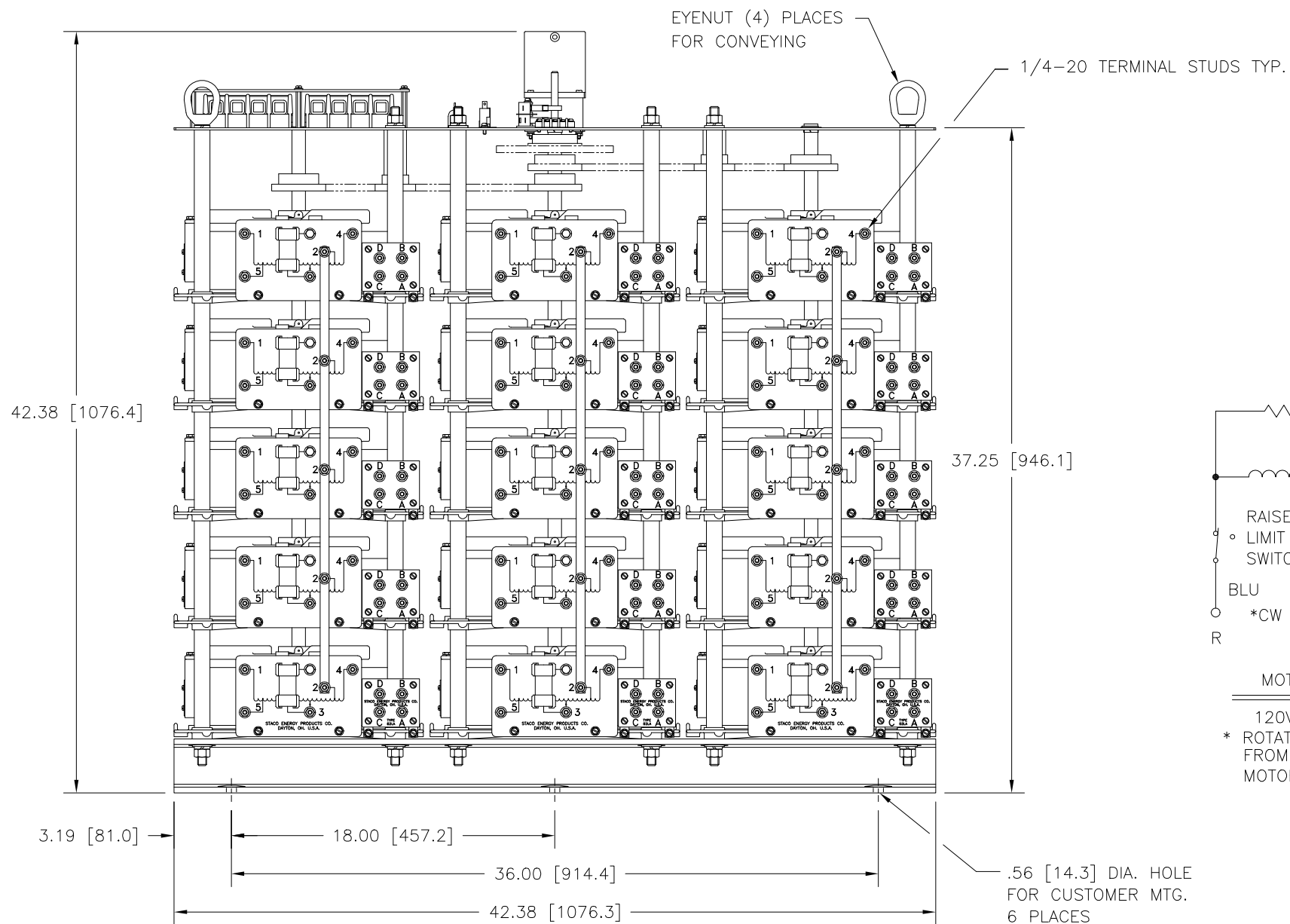
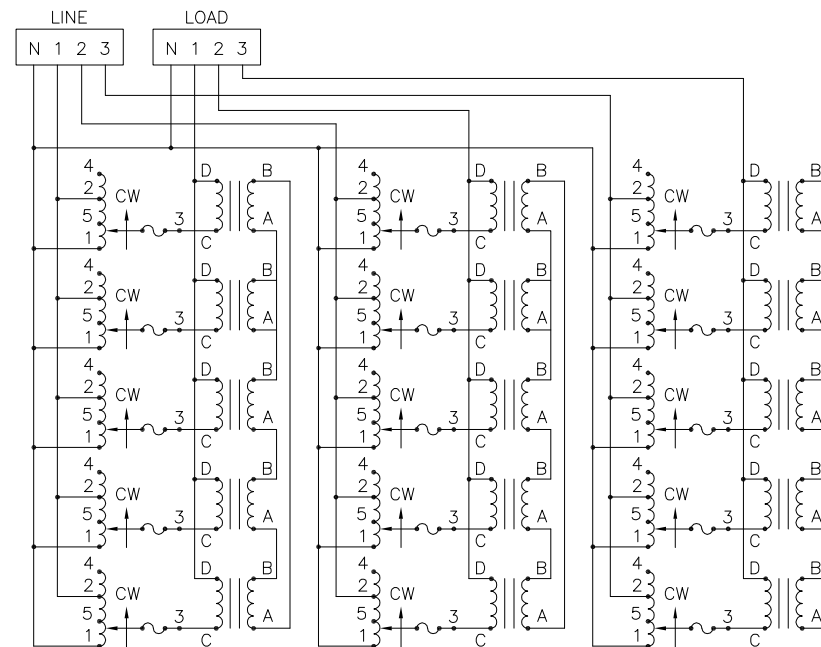
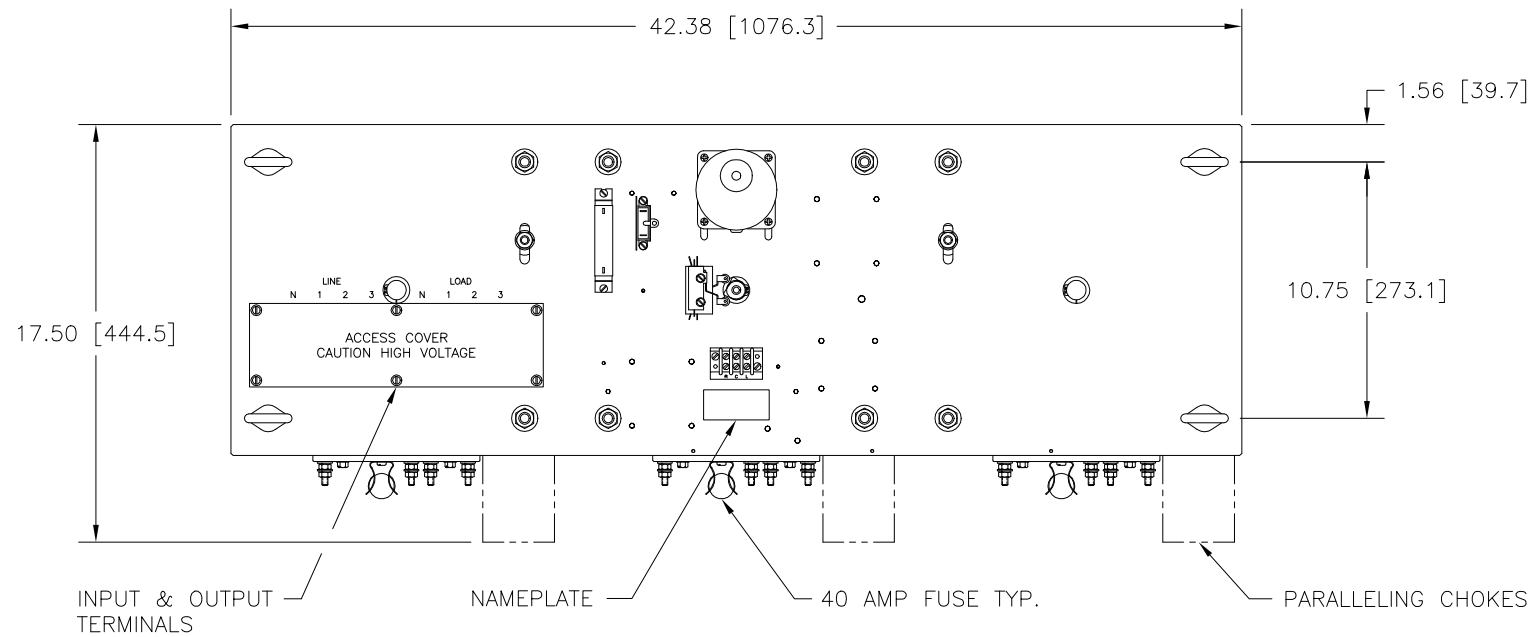
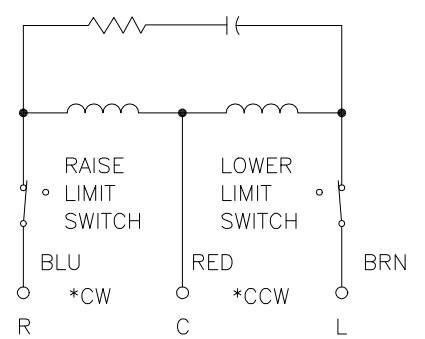


FIGURE A
MAXIMUM OUTPUT CURRENT OF ANY DUAL INPUT VOLTAGE OR VOLTAGE DOUBLER UNIT OPERATED AT LOWER INPUT VOLTAGE.

* MAXIMUM OUTPUT CURRENT IN OUTPUT VOLTAGE RANGE FROM 0 TO 25% ABOVE LINE VOLTAGE. AT HIGHER OUTPUT VOLTAGES, OUTPUT CURRENT MUST BE REDUCED ACCORDING TO RATING CURVE, FIGURE A.

++ MAXIMUM KVA AT MAXIMUM OUTPUT AND CORRESPONDING DE-RATED CURRENT. MAXIMUM KVA AT LOWER OUTPUT VOLTAGES MAY BE CALCULATED FROM RATING CURVE, FIGURE A.

V.D. = VOLTAGE DOUBLER.



MOTOR CIRCUIT

120V 50/60 HZ

* ROTATION AS VIEWED FROM MOTOR END

MOTOR SPEED: SEE CHART

WIRING	INPUT		OUTPUT		SHAFT ROTATION TO INCREASE VOLTAGE	TERMINAL CONNECTIONS		
	VOLTS	HERTZ	VOLTS	CONSTANT CURRENT LOAD		FOR INCREASING VOLTAGE AS VIEWED FROM ROTOR END		
				MAX. AMPS		MAX. KVA	INPUT	OUTPUT
THREE PHASE WYE	480	50/60	0-480	175	145.3	CW	4-4-4	D-D-D
		60	0-560	175	169.5	CW	2-2-2	D-D-D
	240	60	0-560	175*75 V.D.	72.7 ++	CW	5-5-5	D-D-D

UNLESS OTHERWISE SPECIFIED, TOLERANCE IS ± DECIMALS HOLES ANGLES DRAFT UNITS IN [mm]

.XX .040-.12 .002-.03 1° 1-1/2°

MATERIAL: ALL DIMENSIONS APPLY AFTER PLATING

TITLE: SPEC. CONTROL DRAWING VARIABLE TRANSFORMER TYPE: M6020-15Y

STACO ENERGY PRODUCTS CO. A Components Corporation of America Company 302 South Boulevard Dayton, Ohio 45403 USA

DRAWN BY	DATE	FIRST USED ON	DO NOT SCALE DWG.
TIM RAU	9/19/97		
CHECKER	DATE	WEIGHT APPROX.	CAGE CODE
		1269 LBS.	83008
ENGINEER	DATE	SCALE	SHEET 1 OF 1
		.25=1	

SPEED (SECONDS)	MODEL NUMBER
30	30M6020-15Y
60	60M6020-15Y

DWG. NO. 032-8568

.56 [14.3] DIA. HOLE FOR CUSTOMER MGT. 6 PLACES